





TM-248 841A 2011-06

Eff. w/Serial No. MB230302Y

Processes

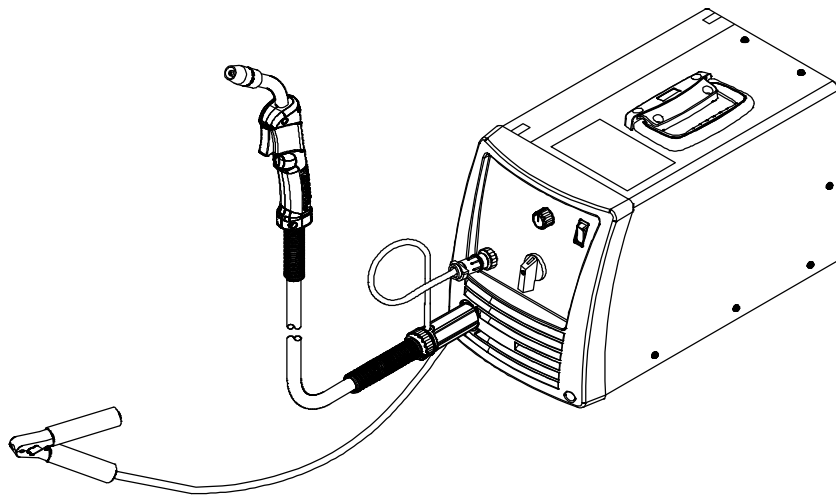
-  MIG (GMAW) Welding
-  Flux Cored (FCAW) Welding

Description



Arc Welding Power Source And Wire Feeder

Handler[®] 190 And H100S4-10 Gun




www.HobartWelders.com



PARTS LIST

SECTION 10 – PARTS LIST

 Hardware is common and not available unless listed.

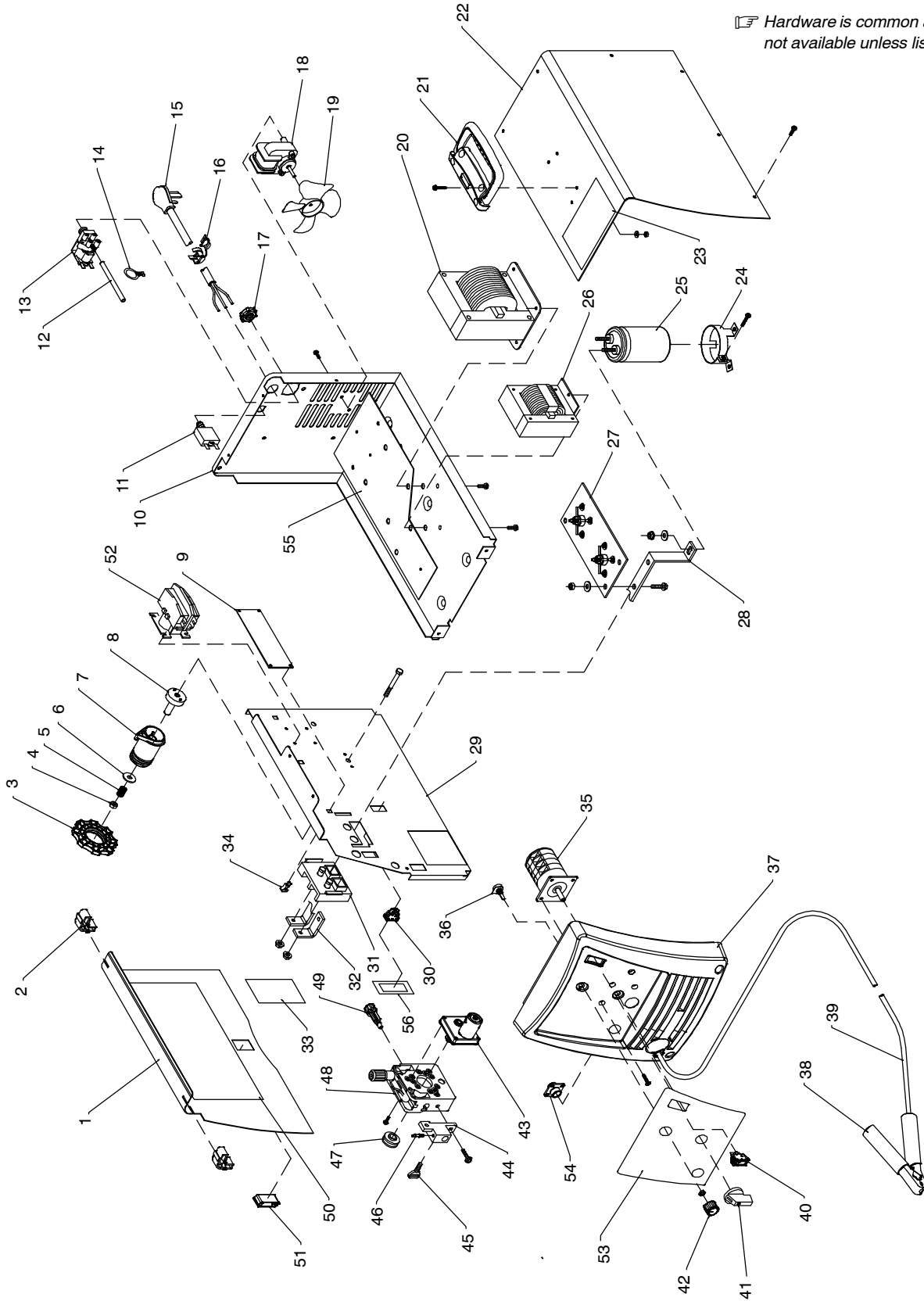


Figure 10-1. Main Assembly

Ref. 249 094-A

| Item No. | Dia. Mkgs. | Part No. | Description | Quantity |
|-----------------------------------|------------|-------------|--|----------|
| Figure 10-1. Main Assembly | | | | |
| 1 | | 199 566 | .. Door, Access | 1 |
| 2 | | 196 006 | .. Hinge, Door | 2 |
| 3 | | 211 887 | .. Hub, Nut | 1 |
| 4 | | 204 608 | .. Nut | 1 |
| 5 | | 202 998 | .. Spring, Cprsn | 1 |
| 6 | | 203 072 | .. Washer, Flat | 1 |
| 7 | | 211 339 | .. Hub, Spool | 1 |
| 8 | | 202 726 | .. Adapter, Spool Hub | 1 |
| 9 | PC1 | 248 284 | .. Circuit Card Assy, Control | 1 |
| 10 | | 195 999 | .. Base, Lower | 1 |
| 11 | CB1 | 210 109 | .. Supplementary Protector, 25 Amp | 1 |
| 12 | | 196 467 | .. Tubing, PVC .187 ID x .312 OD x 23.00 | 1 |
| 13 | GS1 | 216 398 | .. Valve, Gas | 1 |
| 14 | | 197 198 | .. Cable Tie, .700-.799 Bundle Dia | 2 |
| 15 | | 152 118 | .. Cord Set, 250v 6-50p 12ga 3/C 7ft Spt-3 Jkt | 1 |
| 16 | | 111 443 | .. Bushing, Strain Relief | 1 |
| 17 | | 137 761 | .. Nut, Gas Valve | 1 |
| 18 | FM | 196 064 | .. Motor, Fan | 1 |
| 19 | | 409 953-001 | .. Blade, Fan Cooling | 1 |
| 20 | T1 | 226 069 | .. Transformer, Power Assy | 1 |
| 21 | | 208 015 | .. Handle, Carrying | 1 |
| 22 | | +196 005 | .. Wrapper | 1 |
| 23 | | 204 036 | .. Label, Warning | 1 |
| 24 | | 203 491 | .. Clamp, Capacitor | 1 |
| 25 | C1 | 193 040 | .. Capacitor, Electrft 100000uf | 1 |
| 26 | Z1 | 225 891 | .. Reactor Assy | 1 |
| 27 | SR1 | 193 316 | .. Rectifier Assy | 1 |
| 28 | | 193 193 | .. Bus Bar (Positive) | 1 |
| 29 | | +228 706 | .. Baffle, Center | 1 |
| 30 | S3 | 196 575 | .. Switch, Rocker | 1 |
| 31 | TE1 | 193 144 | .. Insulator, Output Stud | 1 |
| 32 | | 193 194 | .. Bus Bar (Negative) | 1 |
| 33 | | 216 830 | .. Label, Warning | 1 |
| 34 | | 134 201 | .. Stand-Off | 4 |
| 35 | S2 | 226 813 | .. Switch, Rotary 32A 7 Position | 1 |
| 36 | R2 | 209 873 | .. Potentiometer, | 1 |
| 37 | | 229 738 | .. Panel, Front (Black) | 1 |
| 38 | | 208 820 | .. Clamp, Work | 1 |
| 39 | | 196 619 | .. Cable, Work | 1 |
| 40 | S1 | 196 574 | .. Switch, Rocker Dpst | 1 |
| 41 | | 228 400 | .. Knob, Pointer (Voltage) | 1 |
| 42 | | 211 338 | .. Knob, Pointer (Wfs) | 1 |
| 43 | DM1 | 217 778 | .. Motor, Gear | 1 |
| 44 | | 193 189 | .. Connector, Gun | 1 |
| 45 | | 196 654 | .. Screw, Thumb | 1 |
| 46 | | 230 012 | .. Fitting, Gas Barbed | 1 |

+When ordering a component originally displaying a precautionary label, the label should also be ordered.

To maintain the factory original performance of your equipment, use only Manufacturer's Suggested Replacement Parts. Model and serial number required when ordering parts from your local distributor.

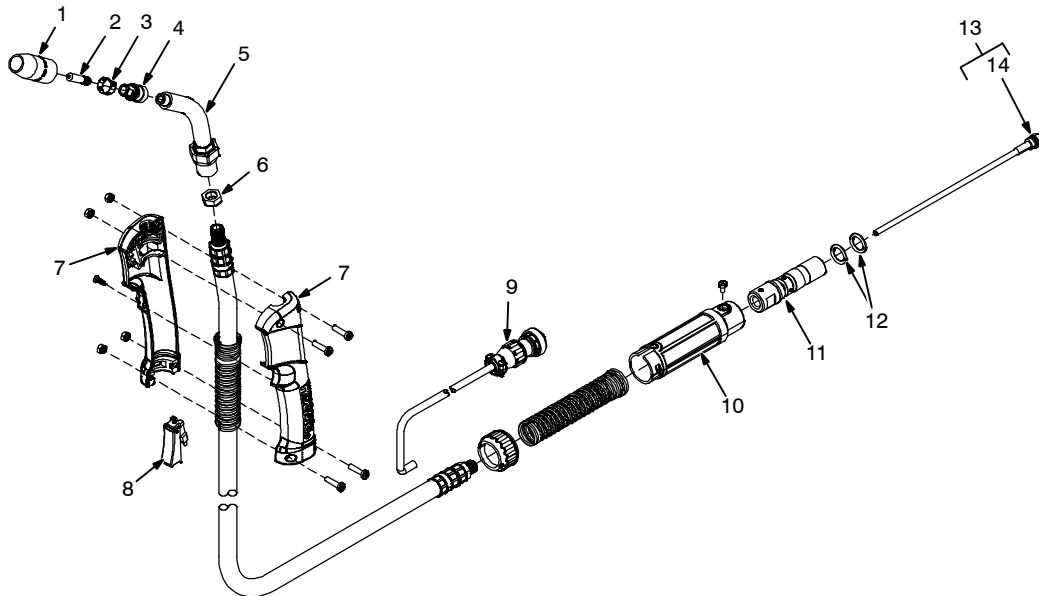
| Item No. | Dia. Mkgs. | Part No. | Description | Quantity |
|----------|------------|----------|-------------|----------|
|----------|------------|----------|-------------|----------|

Figure 10-1. Main Assembly (Continued)

| | | | | |
|--------|-----|---------|---|---|
| ... 47 | | 246 565 | .. Roll, Feed .030/.035 In. V/VK Groove | 1 |
| ... 48 | | 194 508 | .. Head, Feed Assy | 1 |
| ... 49 | | 203 025 | .. Guide, Wire Inlet | 1 |
| ... 50 | | 248 827 | .. Label, Weld Chart | 1 |
| ... 51 | | 204 711 | .. Latch | 1 |
| ... 52 | CR3 | 217 585 | .. Contactor | 1 |
| ... 53 | | | .. Label, Nameplate (Order By Model And Serial Number) | 1 |
| ... 54 | | 048 282 | .. Rcpt W/Skts, (Service Kit) | 1 |
| ... 55 | | 228 643 | .. Plate, Stiffener Base | 1 |
| ... 56 | | 229 794 | .. Label, Spoolgun/Mig Gun | 1 |
| ... | | 221 037 | .. Regulator/Flowmeter, 10-50 CFH Argon/CO ₂ | 1 |
| ... | | 183 581 | .. Hose, Assembly Gas | 1 |

+When ordering a component originally displaying a precautionary label, the label should also be ordered.

To maintain the factory original performance of your equipment, use only Manufacturer's Suggested Replacement Parts. Model and serial number required when ordering parts from your local distributor.



243 842-A

Figure 10-2. H100S4-10 Gun

| Item No. | Dia. Mkgs. | Part No. | Description | Quantity |
|----------|------------|----------------|---------------------------------------|----------|
| | | 245 926 | Figure 10-2. H100S4-10 Gun | |
| ... 1 | | 169 715 | .. Nozzle, Slip Type .500 Orf Flush | 1 |
| ... 1 | | +226 190 | .. Nozzle, Flux Cored Slip Type | 1 |
| ... 2 | | +087 299 | .. Tip, Contact Scr .023 Wire X 1.125 | 1 |
| ... 2 | | +000 067 | .. Tip, Contact Scr .030 Wire X 1.125 | 1 |
| ... 2 | | +000 068 | .. Tip, Contact Scr .035 Wire X 1.125 | 1 |
| ... 2 | | +000 069 | .. Tip, Contact Scr .045 Wire X 1.125 | 1 |
| ... 3 | | 170 470 | .. Ring, Retaining | 1 |
| ... 4 | | 169 716 | .. Adapter, Contact Tip | 1 |
| ... 5 | | 246 373 | .. Tube, Head | 1 |

+OPTIONAL

To maintain the factory original performance of your equipment, use only Manufacturer's Suggested Replacement Parts. Model is required when ordering parts from your local distributor.

| Item No. | Dia. Mkgs. | Part No. | Description | Quantity |
|---|------------|----------|---|----------|
| 245 926 Figure 10-2. H100S4-10 Gun (Continued) | | | | |
| ... | 6 | 243 865 | Nut, jam | 1 |
| ... | 7 | 242 832 | Handle | 1 |
| ... | 8 | 225 410 | Switch, Trigger | 1 |
| ... | 9 | 079 878 | Housing Plug & Pins | 1 |
| ... | 10 | 246 380 | Housing, Power Pin | 1 |
| ... | 11 | 245 927 | Connector, Feeder | 1 |
| ... | 12 | 197 123 | O-Ring, .312 ID X .062 70 Duro Buna-n | 2 |
| ... | 13 | +194 010 | Liner, Monocoil .023/.025 Wire x 15ft (Consisting Of) | 1 |
| ... | 13 | +194 011 | Liner, Monocoil .030/.035 Wire x 15ft (Consisting Of) | 1 |
| ... | 13 | +194 012 | Liner, Monocoil .035/.045 Wire x 15ft (Consisting Of) | 1 |
| ... | 14 | 079 975 | O-Ring, .187 ID x .103Cs Rbr | 1 |

+OPTIONAL

To maintain the factory original performance of your equipment, use only **Manufacturer's Suggested Replacement Parts**. Model is required when ordering parts from your local distributor.

10-3. Optional Drive Rolls

| For All Feed Head Assemblies | |
|------------------------------|--|
| PART NO. | WIRE DIAMETER INCHES (mm) |
| 237 338 | .023/.025 (.6) and .030/.035 (.8 and .9) |
| 202 926 | .030/.035 (.8 and .9) and .045 (1.2 VK Groove) |
| 246 565 | .030/.035 (.8 and .9) V/VK Grooves |

10-4. Options

| PART NO. | DESCRIPTION | REMARKS |
|----------|----------------------------------|---|
| 770 187 | Running Gear/Cylinder Rack | For One Small Gas Cylinder, 100 lb (45 kg) max. |
| 194 776 | Small Running Gear/Cylinder Rack | For One Small Gas Cylinder, 75 lb (34 kg) max. |
| 245 926 | H100S4-10 Replacement Gun | 10 ft length/.030-.035 wire size |
| 300 796 | SpoolRunner 100 Spool Gun | For push/pull wire feeding |
| 195 186 | Protective Cover | Weatherproof nylon |
| 212 492 | Regulator/Flowmeter | For use with CO ₂ shielding gas, 10-50 CFH |
| 144 108 | Gas hose, 5 ft | For use with regulator/flowmeter 212 492 |

10-5. Consumables

| ITEM | HOBART PACKAGE NO.* | MILLER PACKAGE NO.** |
|----------------------------------|-------------------------|--------------------------|
| Contact Tips | | |
| .023/.025 in (0.6 mm) | 770 174 (5 per package) | 087 299 (10 per package) |
| .030 in (0.8 mm) | 770 177 (5 per package) | 000 067 (10 per package) |
| .035 in (0.9 mm) | 770 180 (5 per package) | 000 068 (10 per package) |
| .045 in (1.2 mm) | 770 183 (5 per package) | 000 069 (10 per package) |
| MIG Nozzle (Standard) | | |
| | 770 404 | 169 715 |
| Gasless Flux Cored Nozzle | | |
| | 770 487 | 226 190 |
| Tip Adapter | | |
| | 770 402 | 169 716 |
| Replacement Liners | | |
| .023/.025 in (0.6 mm) | 196 139 | 194 010 |
| .030/.035 in (0.8/0.9 mm) | 196 139 | 194 011 |
| .035/.045 in (0.9/1.2 mm) | 196 140 | 194 012 |

*Available at farm and tool supply retailers.

**Available at Hobart/Miller welding distributors.

Hobart Welding Products

An Illinois Tool Works Company
600 West Main Street
Troy, OH 45373 USA

For Technical Assistance:

Call 1-800-332-3281

For Literature Or Nearest Dealer:

Call 1-877-Hobart1

